

Hospitality Suite/Events Package

PCIC Orlando

Sept. 16-19, 2024

Family Rooms
Convention Level

[Family Rooms and Suites in Orlando, FL | Hyatt Regency Orlando](#)

[3-D Model Gallery - Hyatt Regency Orlando \(visitingmedia.com\)](#)

Hospitality Events, Meeting Room Suites, and Hospitality Suites

- This is the information package for the Suites.
- There are 3D virtual Tour Links on the Convention Level and Suite pages, and also a general 3D Link for Lobby, Pool, etc.:

[360° Photos - Hyatt Regency Orlando \(visitingmedia.com\)](http://visitingmedia.com)

- Please review the pricing info. for Rooms or Suites and pay attention to the Notes.
- Please provide your Room Request, and also if you want a Registration area Table?

Choice	Days	Dates	Room/Suite	Specific Start/End Times	Special Requests
1st					
2nd					
3rd					

Registration area Table & No. (1 or 2)	Days	Dates

Reply to Nehad El-Sherif
Copy to Tim Driscoll

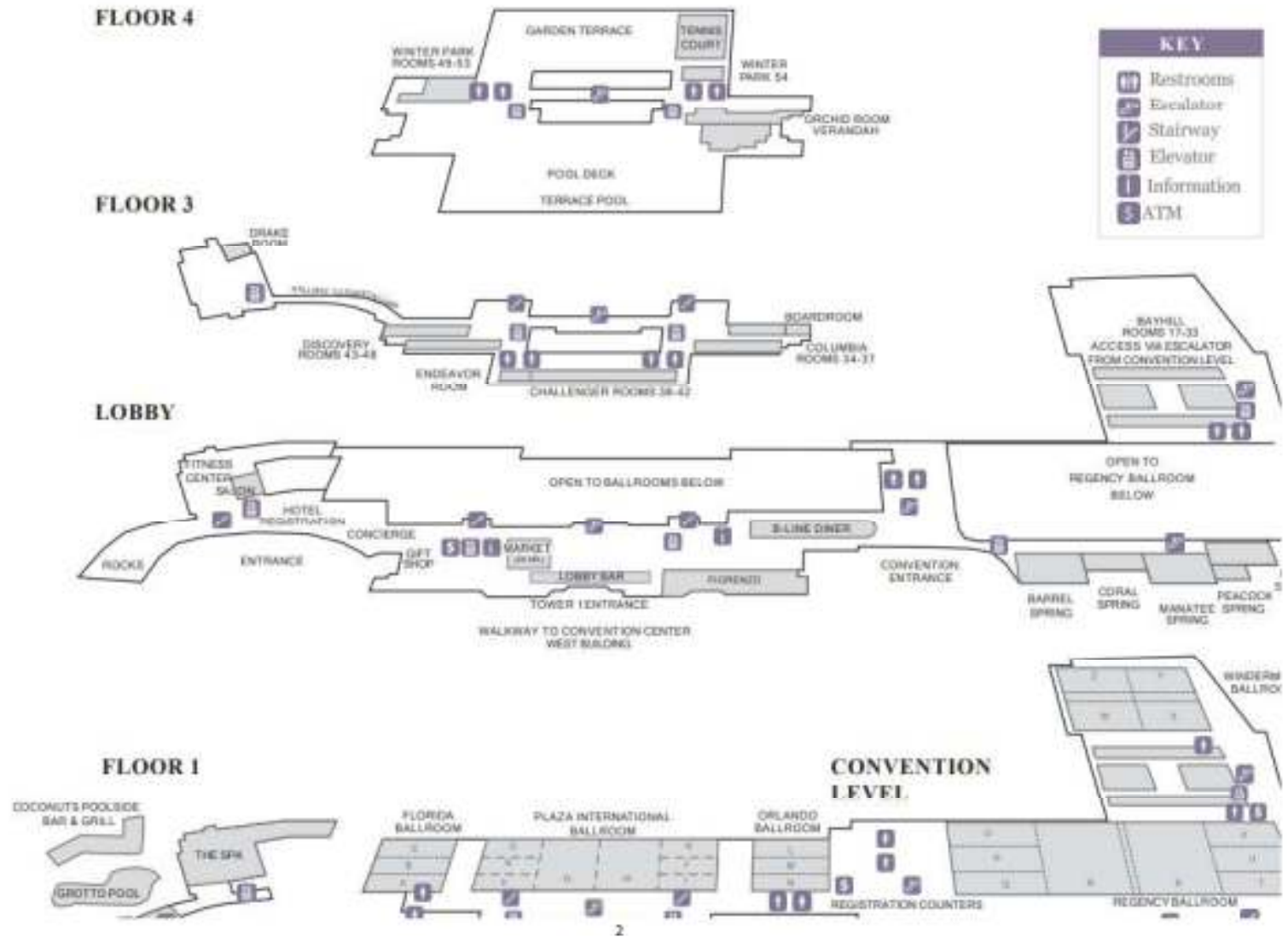
nehad.e.el-sherif@ieee.org
tim.driscoll@ieee.org

				Suite Prices				
Rooms		Location	Sq.ft	Sat	Sun	Mon	Tue	Wed
Celebration Rooms	11 to 16	Convention Level	850-860	\$300	\$300	\$600	\$600	\$300
	7 to 10	Convention Level	1,009	\$350	\$350	\$700	\$700	\$350
	1 to 4	Convention Level	1,048-1,071	\$400	\$400	\$750	\$750	\$400
	5 and 6	Convention Level	1,321	\$500	\$500	\$900	\$900	\$500
	12/13, 14/15	Convention Level	1,715	\$600	\$600	\$1,000	\$1,000	\$600
	7/8, 9/10	Convention Level	2,018-2,030	\$650	\$650	\$1,100	\$1,100	\$650
	1/2, 3/4	Convention Level	2,096-2,126	\$700	\$700	\$1,150	\$1,150	\$700
	5/6	Convention Level	2,642	\$750	\$750	\$1,300	\$1,300	\$750
Orlando Ballroom L		Convention Level	2,713	\$800	\$800	\$1,500	\$1,500	\$800
Regency Lounge		Convention Level	1,476	\$1,000	\$1,000	\$1,800	\$1,800	\$1,000
Windermere Ballroom X, W		Convention Level	8,040	\$4,000	\$4,000	\$4,000	\$4,000	\$4,000
Regency Ballroom O, P, Q		Convention Level	4,342-4,873	-	\$4,000	-	-	-
Orchid/Veranda		4th Floor	2,140/2,802	\$1,200	\$1,200	\$2,000	\$2,000	\$1,200
Skyline Rooms	Half Day	Tower 2, 26 th & 27 th Floors	691	\$600	\$600	\$600	\$600	\$600
	Full Day			\$1,200	\$1,200	\$1,200	\$1,200	\$1,200
Penthouse Suite		Tower 2	2,483	\$968	\$968	\$968	\$968	\$968
Presidential Suite		Tower 1	1,772	\$868-898	\$868-898	\$868-898	\$868-898	\$868-898
Hospitality Suite		Tower 2	1,785	\$668-758	\$668-758	\$668-758	\$668-758	\$668-758

Notes:

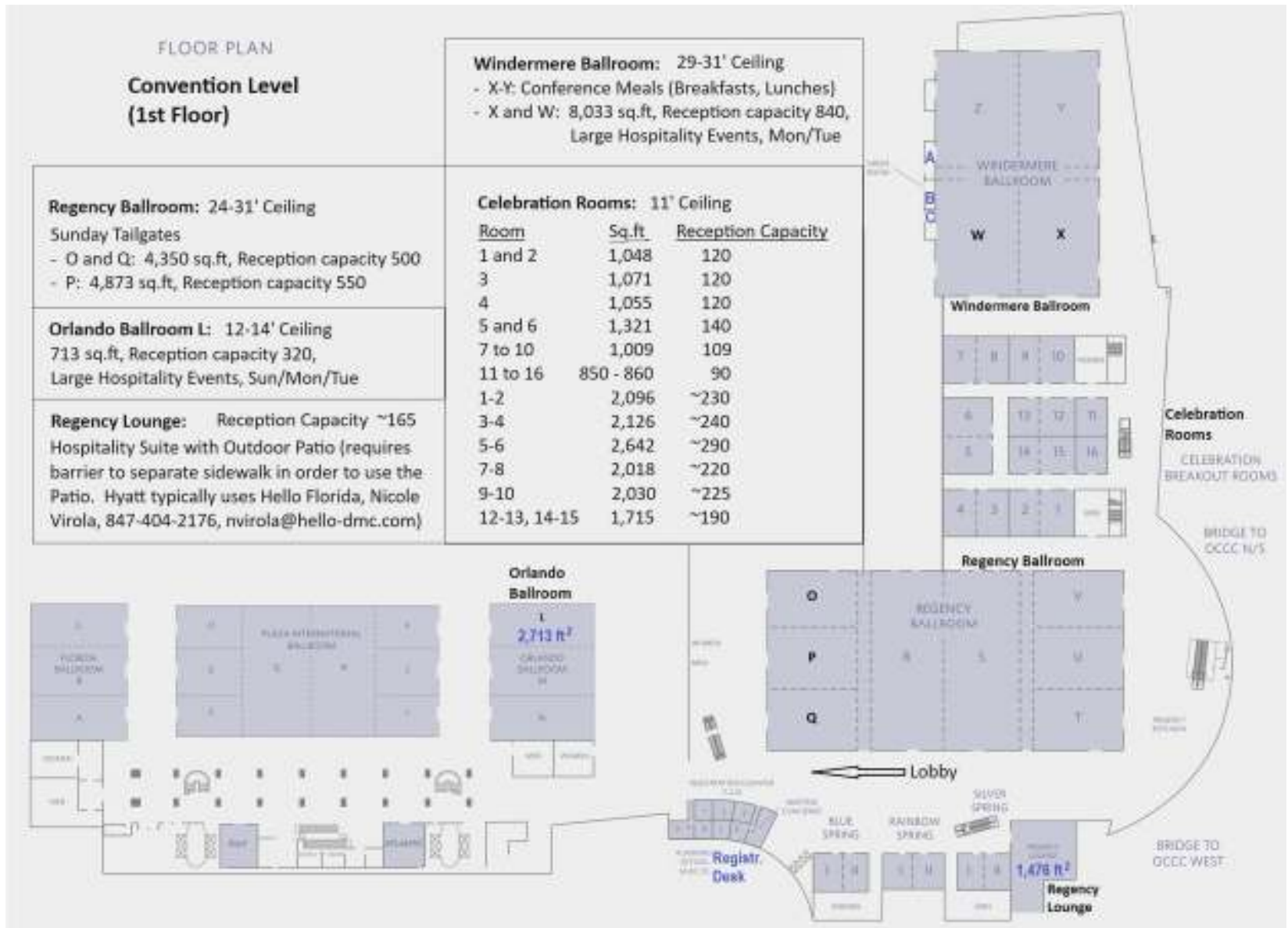
Suites have a bedroom on both sides of the Parlour area. 2 Presidentials have a balcony, and 2 are bi-level
Suite's area includes both bedrooms.
F&B can be brought into the suites, but not an outside Caterer. Food setup tables, wine glasses, etc. would be through the hotel. A bartender can be obtained through the hotel if desired.
Suite standard check-in and check-out times in the guest room Towers are 3:00pm and 11:00am respectively.
Suites include costs for both bedrooms and the Resort fees.
Crossover Floors between Tower 1 and Tower 2 for the Suites and Skyline rooms are Level 3 and Lobby Level 2. Connection to the Conference area is from Lobby Level 2. Level 3 is a good crossover, less traffic, and overlooks the Lobby.
Skyline rooms - if a setup and takedown is within 1/2 day, the half day fee would apply. For example, a 2-day rental could be done for \$1,800. There is a bathroom in the room.
If a meeting room is reserved for only 1 night, the peak night (Mon/ Tue) rate applies, regardless of the night
If a meeting room is requested for multiple nights, they must be consecutive nights. If a request is to move to a larger room for a night, e.g. small room Mon., bigger room Wed., that can be accommodated (i.e. special requests will be considered).
Meeting Rooms must have F&B served through hotel catering. Specialty wines and premium alcohol may be excepted with a corkage fee (\$25 wine, \$30 alcohol), and needs to be negotiated with hotel.
Large events may have the rental costs reduced or eliminated based on historical sponsorship and participation.
Taxes are not included in the pricing sheet, for the Tower Suites.
Suites and Skyline rooms would be paid direct to hotel, F&B and Rent. Catering on meeting room suites is direct with the hotel.
List any specific times on opening/closing of Suites/Events. Base available times are 7:30-11:59pm Mon, 5:00-11:59 other days.
Provide requests for Sponsor (give-a-way) tables, and days (in Registration area). Will be available during Registration times.

Hyatt Regency Overview Layout



Meetings Rooms, Convention Level 3D Tour:

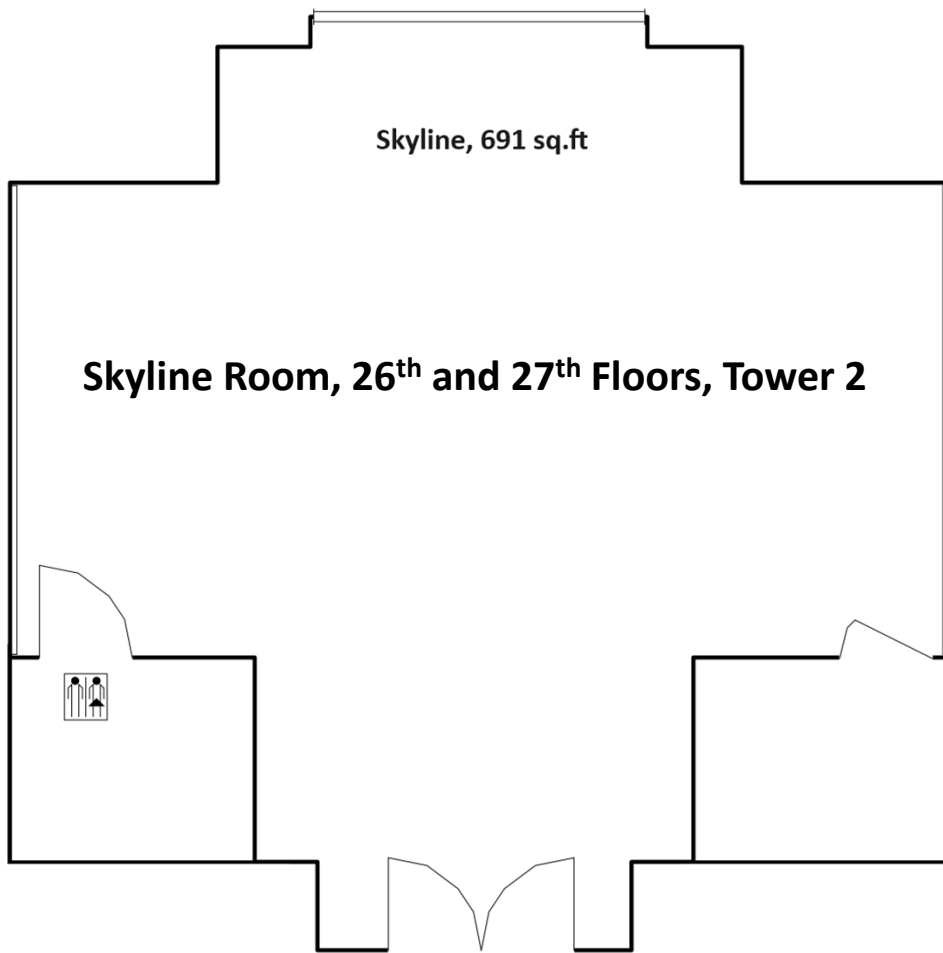
[3-D Model
Gallery - Hyatt
Regency
Orlando
\(visitingmedia.com\)](#)





Regency Lounge





FLOOR PLAN

Fourth Level

Orchid Room/Veranda:
Accessible by Escalator and Elevator.
Built in Bar.

ORCHID
ROOM 2,140 ft²

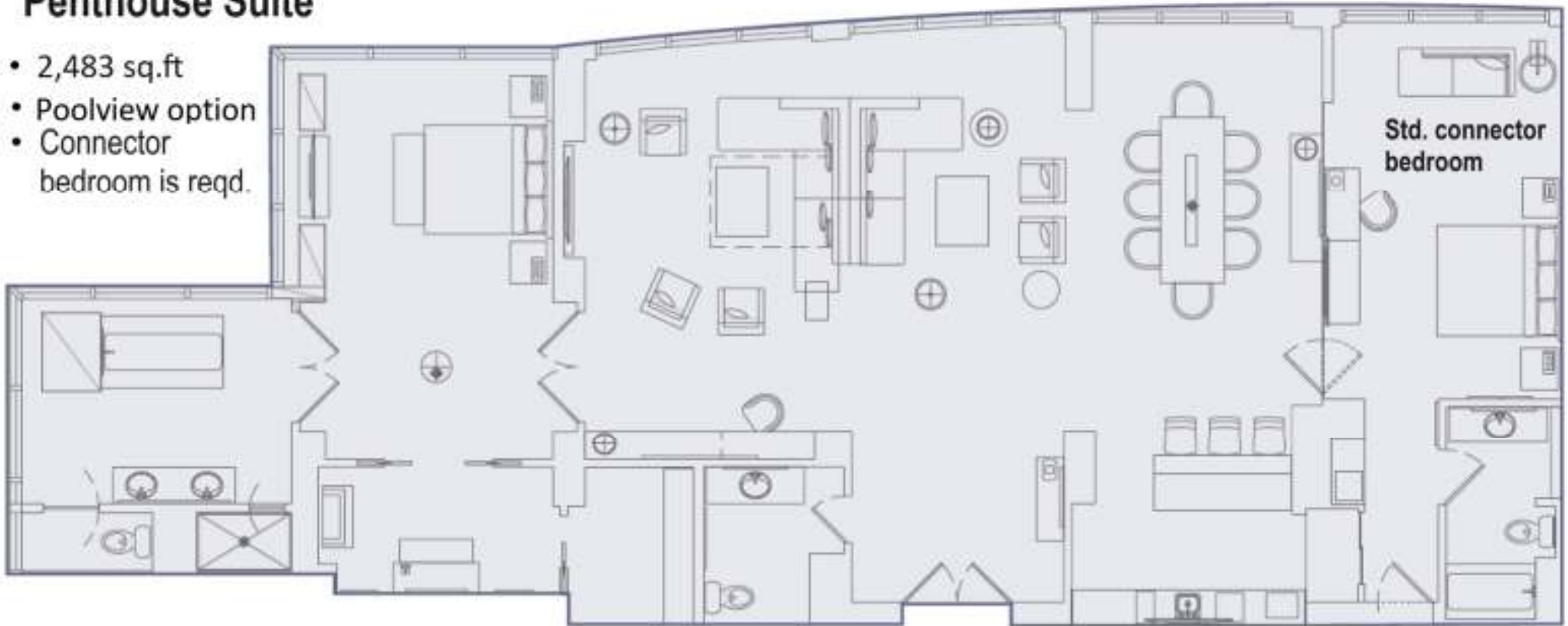
VERANDAH 2,802 ft²



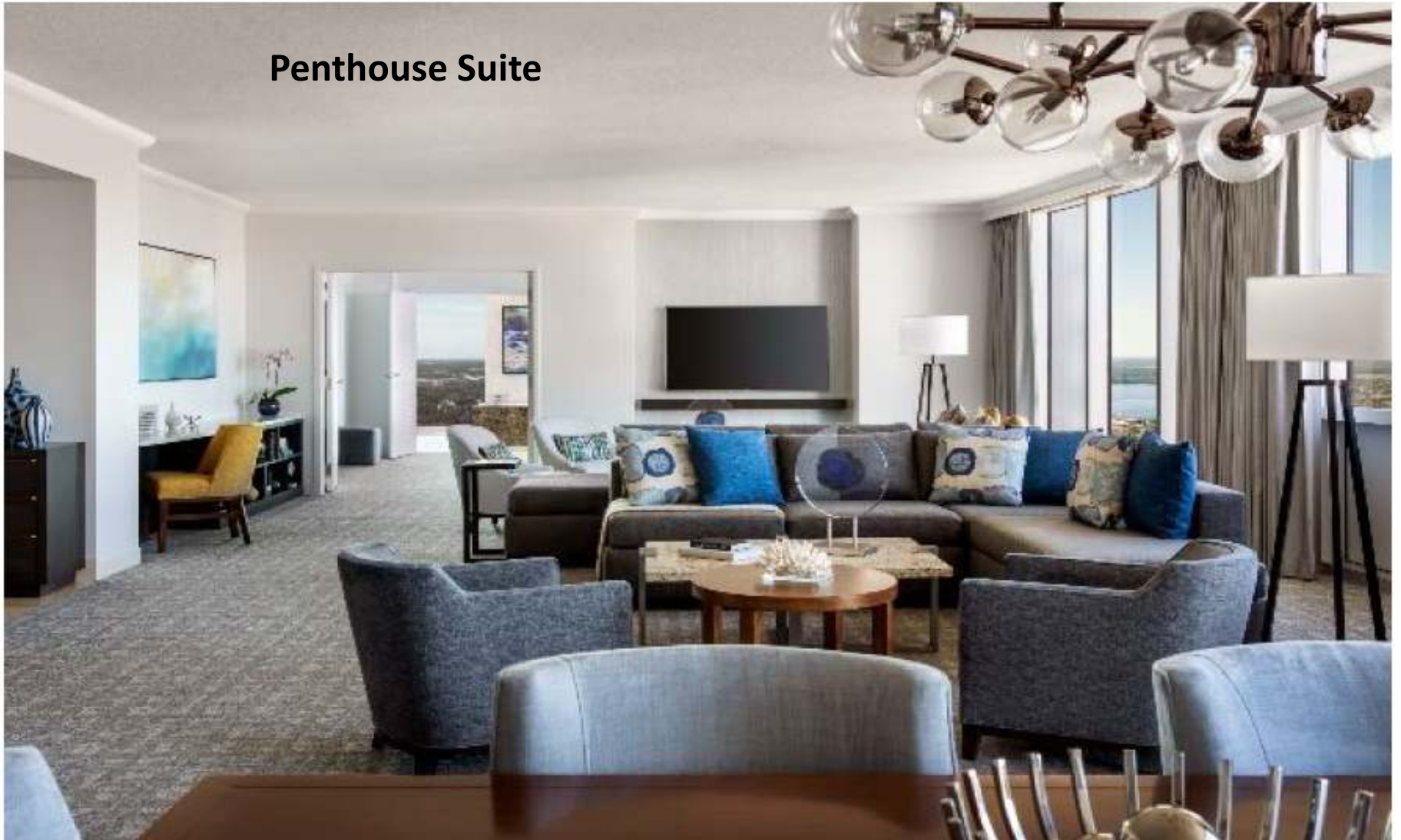
Penthouse Suite 3D Tour: [3-D Model Gallery - Hyatt Regency Orlando \(visitingmedia.com\)](http://3-D Model Gallery - Hyatt Regency Orlando (visitingmedia.com))

Penthouse Suite

- 2,483 sq.ft
- Poolview option
- Connector bedroom is reqd.



Penthouse Suite

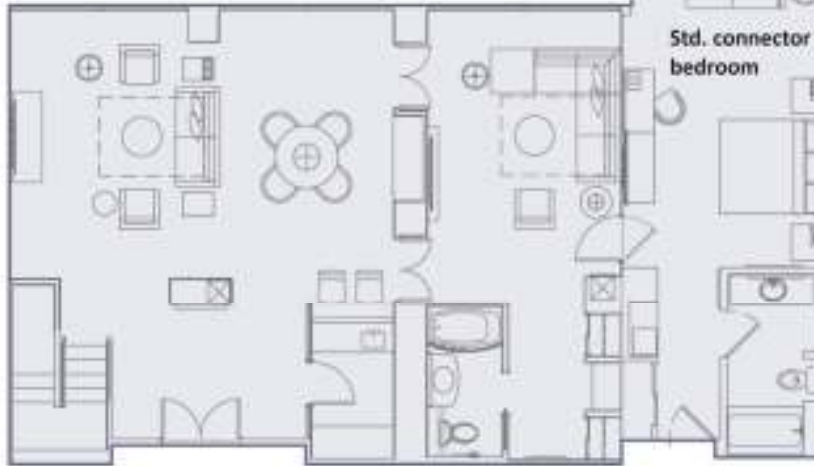


Presidential Suite Bi-Level

- 1,772 sq.ft
- Connector Bedroom required



Upper



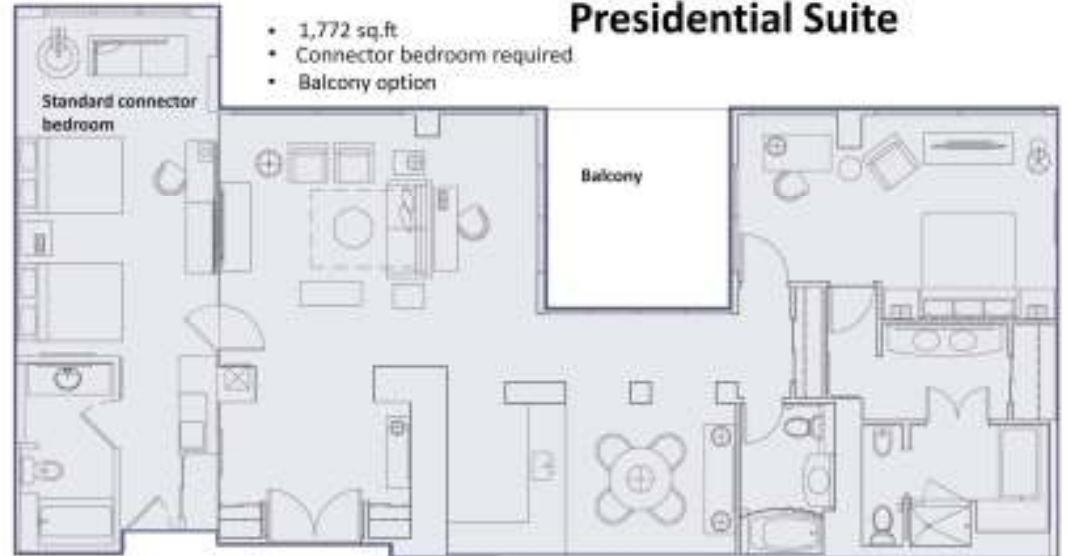
Lower

[3-D Model Gallery - Hyatt Regency Orlando \(visitingmedia.com\)](https://www.visitingmedia.com)



Presidential Suite

- 1,772 sq.ft
- Connector bedroom required
- Balcony option



Hospitality Suite 3D Tour:

[3-D Model Gallery - Hyatt Regency Orlando \(visitingmedia.com\)](http://visitingmedia.com)

Hospitality Suite

- 1,785 sq.ft
- Both connector bedrooms required

